

---

**We at Hindustan  
Engineering  
Industries(HEI) have  
over decade of  
experience of  
designing &  
manufacturing  
crushing plants.**

---



---

### Contact

+91 9800888865

+91 9932695517

ansari.hindustan@gmail.com

crusherhindustan.com

**HINDUSTAN  
ENGINEERING  
INDUSTRIES**

**Manufacturer Of Stone  
Crushers & Crushing Plants**



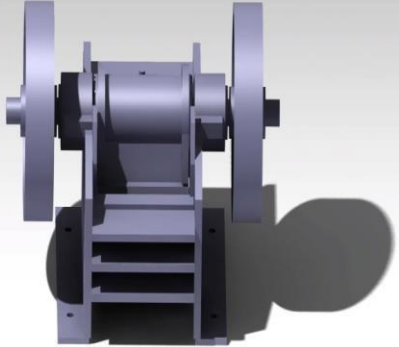
# Our Products

- **Jaw crusher**
- **Vibrating Screen**
- **Vibro Feeder**
- **Conveyors**
- **Crushing Plant (20 to 500 TPH)**
- **Mobile Crushing Plant**





# Jaw Crusher: Single Toggle

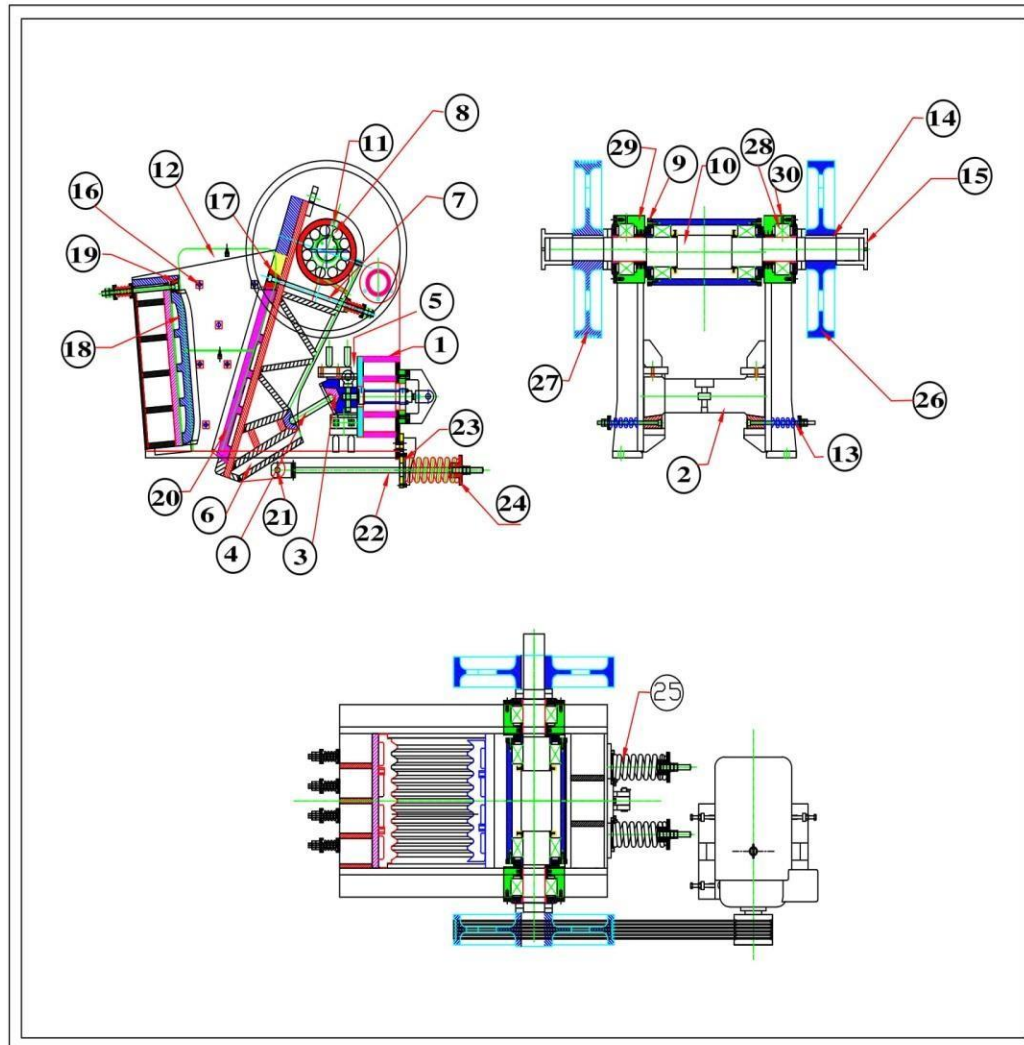


- **Typical application for our single toggle jaw crushers are in minning,quarring & recycling. The jaw crushers handle ores, rock gravel and recycled concrete.**
- **These rugged machines are manufactured with heavy duty parts for constant operation and long life**
- **Each machine is backed up by Hindustan total after market services and spares parts support.**





# Cross-Section of Single Toggle Jaw Crusher



PART NO	DESCRIPTION	PART NO	DESCRIPTION
1	BODY	16	SIDE PLATE LOCK BOLT
2	GROOVE BLOCK	17	SWING JAW LOCK PLATE
3	JAW STOCK TOGGLE LINER	18	FIXED JAW
4	TOGGLE PLATE	19	FIX JAW LOCK PLATE
5	WEDGE BLOCK	20	SWING JAW
6	JAW STOCK	21	DRAW BACK ROD PIN
7	SWING JAW LOCK BOLT	22	DRAW BACK ROD
8	JAW STOCK BEARING	23	DRAW BACK WASHER WITH LUG
9	JAW STOCK FLANGE	24	DRAW BACK WASHER PLAIN
10	ECCENTRIC SHAFT	25	DRAW BACK ROD SPRING
11	JAW STOCK GREASE CAP	26	V- GROOVE WHEEL
12	SIDE PLATE	27	PLAIN WHEEL
13	GROOVE BLOCK LOCK SPRING	28	BODY BEARING
14	FLY WHEEL KEY	29	BEARING HOUSING (TOP)
15	SCREEN DRIVE PULLEY	30	BODY BEARING GREASE CAP

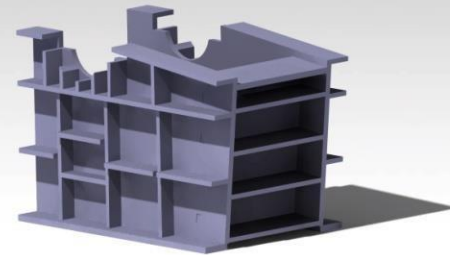
# Main Frame & Jaw Stock



➤ **Fully fabricated heavy duty design on all models. Fully Stress relieved after fabrication. Our design have seen thoroughly field tested under arduous condition.**

➤ **Heavy-duty frames of low carbon steel plate, reinforced with ribs, are fabricated with all mounting surfaces fully machined to accurately align critical component.**

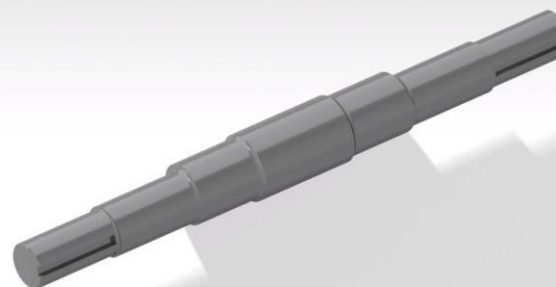
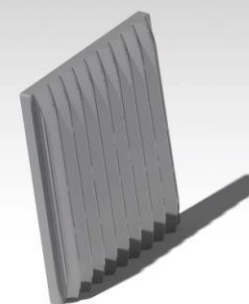
➤ **Jaw Stock & main bearing housings can be removed from the frame as an assembly. The jaw stock is a robust box construction with fully machined face to support moving jaw.**





## Jaw Plate & Shaft

- **Back Faces of all jaw are machine ground to provide firm support. Two piece reversible jaws are provided on our crushers to allow maximum jaw life. The jaw faces are fully reversible.**
- **Forged from hardened and tempered alloy steel with particularly large diameters to suit heavy-duty applications.**
- **High fatigue resistance due to a fine finish and elimination of screw threads and sharp radii which can contribute to stress concentration.**





# Single Toggle Jaw Crusher Specification

MACHINE	FEED OPENING( L X W)MM	MAX FEED SIZE (MM)	DISCHARGE SETTING	PRODUCTI ON(TON)	RPM	REQUIRED POWER (HP)	WEIGHT (TON)
16 x 06	400 x 150	130	20 to 40	8 to 12	350	25	3
16 x 10	400 x 250	200	20 to 50	8 to 14	350	30	3.5
20 x 06	500 x 150	130	20 to 40	15 to 18	350	40	4
20 x 10	500 x 250	200	20 to 50	15 to 20	350	40	4.5
24 x 06	600 x 150	130	20 to 40	18 to 25	350	50	5.7
24 x 15	600 x 380	300	40 to 75	30 to 55	300	50	8
30 x 06	750 x 150	130	20 to 40	25 to 30	325	50	7.5





# Single Toggle Jaw Crusher Specification

MACHINE	FEED OPENING( L X W)MM	MAX FEED SIZE (MM)	DISCHARGE SETTING	PRODUCTI ON(TON)	RPM	REQUIRED POWER (HP)	WEIGHT (TON)
30 x 15	750 x 380	300	40 to 75	45 to 70	300	60	8.5
30 x 20	750 x 500	400	75 to 100	50 to 100	280	60-75	12
36 x 06	900 x 150	130	20 to 40	25 to 35	330	50-60	8.5
36 x 08	900 x 200	175	20 to 50	25 to 35	325	50-60	10
36 x 25	900 x 625	500	80 to 150	100 to 175	280	100-125	18.5
42 x 06	1050 x 150	130	20 to 40	40 to 45	320	50-60	11
42 x 08	1050 x 200	175	20 to 50	40 to 50	320	50-60	11.5



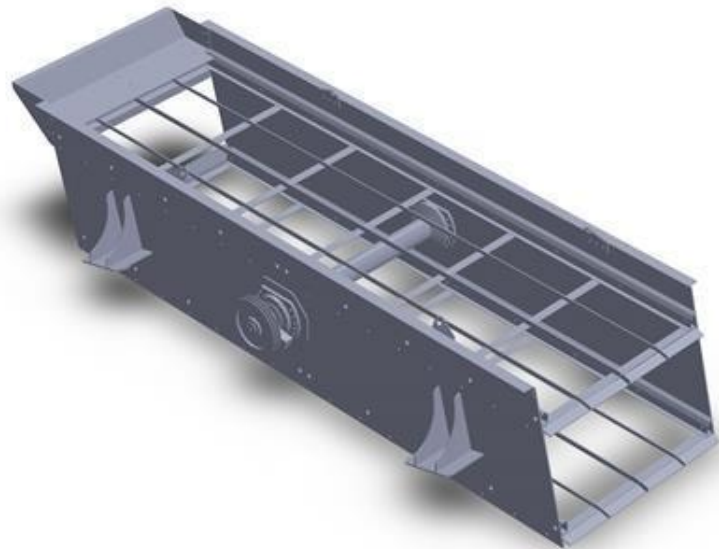


# Single Toggle Jaw Crusher Specification

MACHINE	FEED OPENING( L X W)MM	MAX FEED SIZE (MM)	DISCHARGE SETTING	PRODUCTI ON(TON)	RPM	REQUIRED POWER (HP)	WEIGHT (TON)
42 x 10	1050 x 250	200	20 to 65	45 to 50	320	50-60	12
42 x 32	1050 x 800	600	100 to 180	180 to 250	240	150-160	32
48 x 06	1200 x 150	130	20 to 40	45 to 50	320	60-75	13
48 x 08	1200 x 200	175	20 to 50	50 to 55	320	60-75	13.5
48 x 10	1200 x 250	200	20 to 65	50 to 60	320	60-75	14
48 x 36	1200 x 900	720	100 to 150	200 to 300	230	200-220	35



# Vibrating Screen



- **Typical application of our vibrating screen are ideal for high tonnage operation such as coal and mineral processing or large scale aggregate production.**
- **Heavy duty frame and structure with sufficient stiffer angle add to frame quality**
- **Universal type inclined screen with circular motion for wet and dry screening.**
- **Feed tray arrangement with protective wear liners at feeding point reduces rapid wear and tear of screening surfaces.**
- **Vibrator position ensures uniform vibration all through the screen mesh.**
- **Adjustable counter weight arrangement to suit the requirement of screening efficiency**

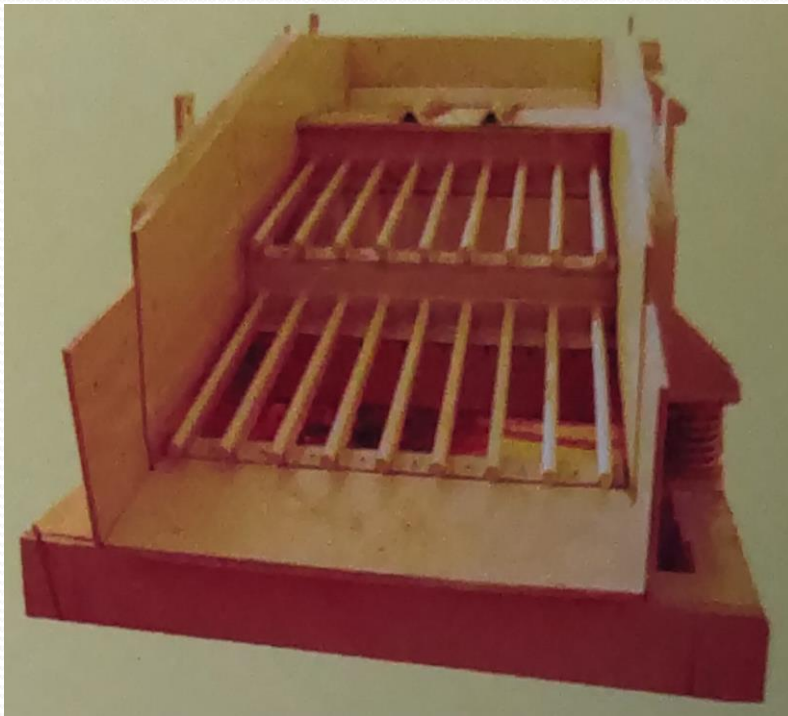


# Vibrating Screen Specification

VIBRATING SCREEN	SIZE IN MM	DECK OPTION	CAPACITY (TPH)	POWER REQUIRED (HP)
10' X 04'	3050 X 1220	2/3/4 Deck	20 – 40	10 HP
12' X 05'	3660 X 1524	2/3/4 Deck	40 – 50	15 HP
15' X 05'	4570 X 1524	2/3/4 Deck	50 – 60	25 HP
18' X 05'	5490 X 1524	2/3/4 Deck	75 – 100	30 HP
20' X 05'	6100 X 1524	2/3/4 Deck	100 – 125	30 HP
22' X 06'	6700 X 1830	2/3/4 Deck	120 - 140	40 HP



# Vibrating-Grizzly Feeder



- These Feeders are applied for both primary and secondary station.
- These are widely used for mining, building material, cement, iron ore and mineral ores industries in crushing and screening plants
- Special design of grizzly bars eliminates material clogging and better sizing effect
- Four sets of load spring stand to better stabilize the operation.





# Plant Project: Images









# HINDUSTAN ENGINEERING INDUSTRIES

---

## Manufacturer Of Stone Crushers & Crushing plants

---



### Address:

Office- Factory: Dumka Road,  
Kalidanga, P.S- Rampurhat, Pin:  
731224, Dist.- Birbhum, West  
Bengal.

### Mobile No.:

+91 9800888865

+91 9932695517

Email: [ansari.hindustan@gmail.com](mailto:ansari.hindustan@gmail.com)

**Website:** [crusherhindustan.com](http://crusherhindustan.com)